

# SIDE MOUNT TRANSDUCER

The Pacific Northwest Technologies Side Mount Transducer measures weight through bending of a vehicle's structural members. The transducer typically mounts on axles, trunnion tubes, and suspension walking beams. At a maximum weight of only 2 pounds, The PNT transducer is ideal for applications requiring a lightweight load sensor to measure loaded structures. Refer to our PNT Installation Instructions for specific mounting details.

## Assembly Numbers:

- 5305012 Stainless Steel transducer
- 6305012 Stainless Steel transducer unitized with mounting hardware

## Unitized Weight:

- Stainless Steel transducer alone: 14.5oz
- Stainless Steel transducer with mounting block and cover: 2lb

## Transducer Body Material:

- Stainless Steel

## Mounting Bolts: 3/8" x 24" x2", SAE grade 8 Hex Head Cap Screw (two required)

- Recommended Torque: 35-40 lb ft

## Cable:

- 4 conductor, color coded, shielded polyurethane jacket
- 4 pin, connector meets military specifications

## Continuous Maximum Excitation:

- 10 volts (ac or dc); 5 to 10 volts recommended

## Nominal Output Impedance:

- 350 ohms  $\pm$  2 ohms

## Nominal Output Impedance:

- 100 volts between leads and load cell body

## Isolation Resistance:

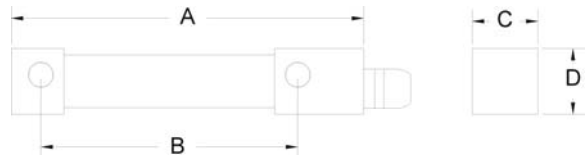
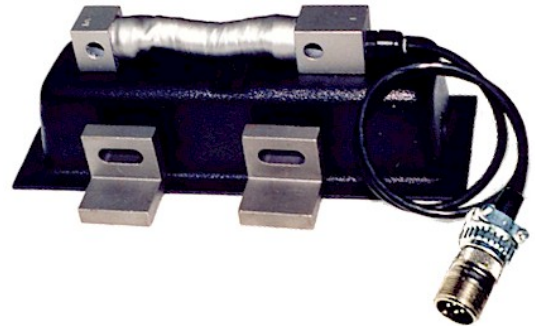
- 500 Megohms at 50 volts

## Temperature Operating Range:

- -40° to 150° F (-40° to 65°C)

## Performance:

- The sensor itself is accurate to within  $\pm 1\%$  of applied load.



## Dimensions

- A: 5.1"
- B: 4.0"
- C: 1.0"
- D: 1.25"

## Connector Pinout

- A: Excitation +
- B: Signal +
- C: Signal -
- D: Excitation -

For more information contact:



**Pacific Northwest**  
TECHNOLOGIES

700 Sleater-Kinney Rd S.E. Suite B-164  
Lacey, WA 98503 USA  
Tel (360) 493-8344 - Fax (360) 491-6073  
Call Toll Free **1-888-340-6246**  
Or Visit <http://www.pntinc.com>